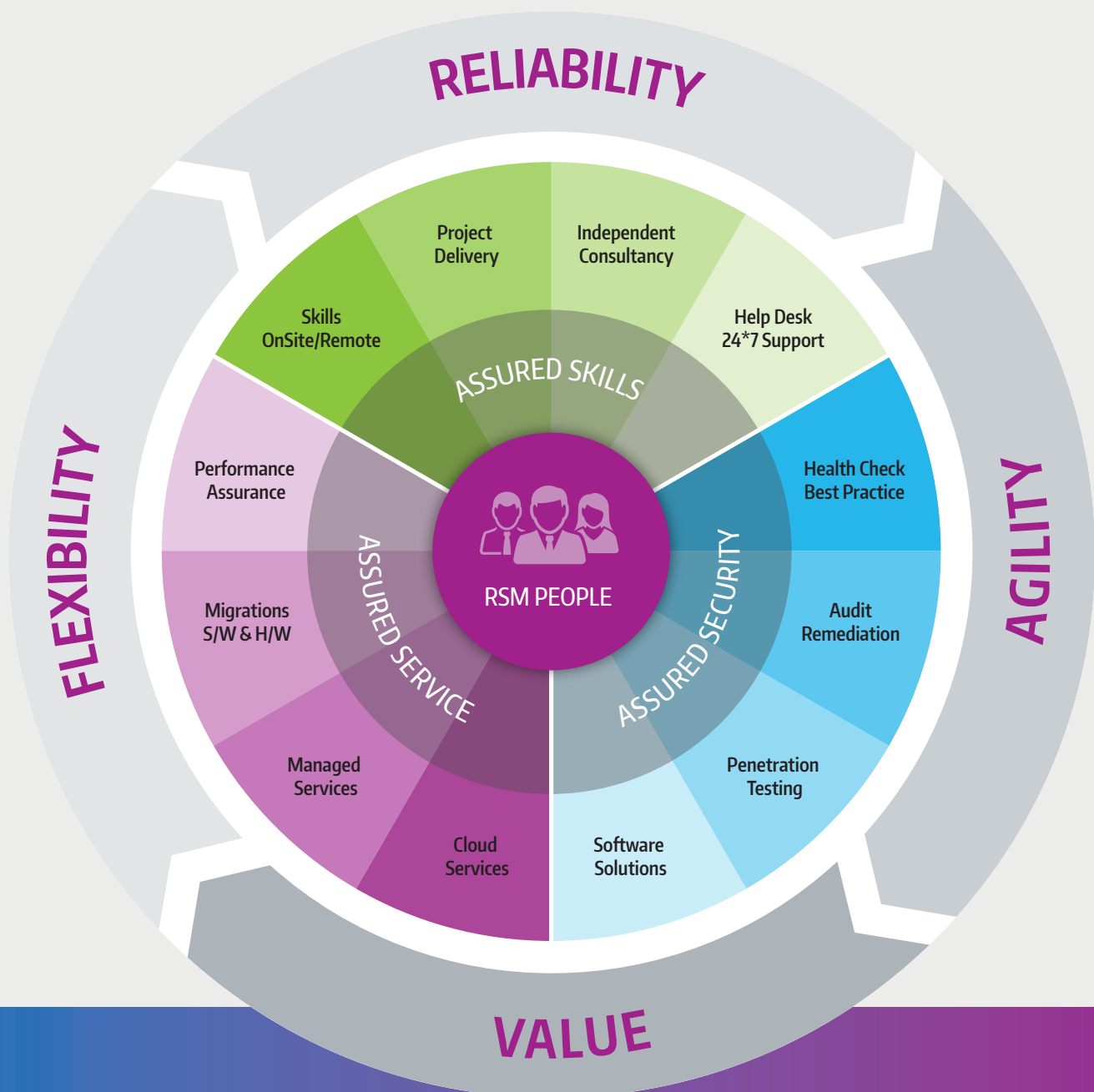




World class, assured IBM z mainframe solutions

Delivering the help you need ...



World class, assured IBM z mainframe solutions



What makes us different?

Reliability

Maintaining what we believe to be the largest available pool of mainframe skills clearly stands RSM apart in the IT industry. End users, System Integrators, ISV's, the big consulting companies and IBM themselves regularly rely upon RSM for specialist mainframe skills.

Agility

Being so highly focused gives RSM the agility to respond quickly to specific client needs, often at very short notice. In a recent case we were onsite within 90 minutes of an urgent request being made for help, remaining there, assisted by others arriving from RSM, over a 96-hour period, getting the problem resolved.

Flexibility

While onsite, our consultants benefit from having instant call upon the vast knowledge contained within the RSM company – over 1000 years' experience of maintaining mainframe infrastructures! Equally, our clients also benefit. Having access to this unique and extensive skills pool, on a totally flexible basis invariably proves invaluable.

Value

RSM Partners is proud of its lengthy track record of client satisfaction – delivering projects, on time, on budget, every time. We constantly strive to exceed client expectations through a mix of reliable skills, careful project management and vigilant service delivery management – all enthusiastically delivered by senior industry professionals.

Why RSM?

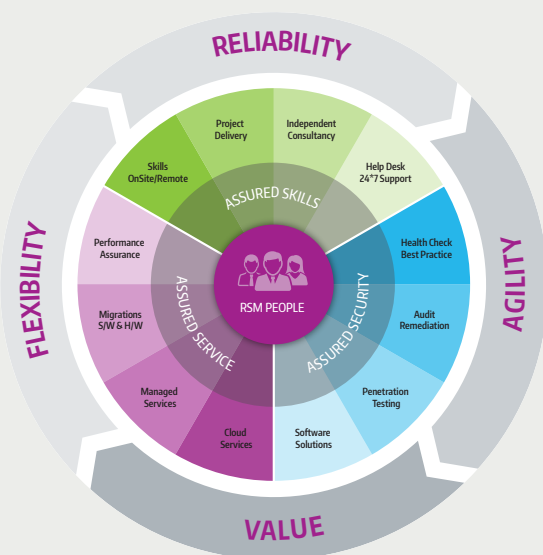
RSM Partners is a global provider of mainframe expertise, software and services - 100% focused on the z System marketplace. Working with many of the world's largest organisations - spanning financial, retail, utility, government and service organisations - no other provider can offer you the same mix of z knowledge and hands-on experience.

At its core, RSM is a people business, maintaining a strong reputation for the reliability, professionalism and depth of skills that our people have. Carefully selected and vetted, RSM consultants invariably have a lengthy pedigree of experience in large organisations, coupled with deep expertise in a number of specialist mainframe infrastructure areas.

RSM aims to address the headaches and challenges you are typically facing: **assured skills; assured service delivery;** and **assured security** – giving you increased confidence in the reliability and robustness of your mainframe environment.

Within each of these areas: skills, service delivery and security, we have developed a number of offerings, aimed at providing you with the most cost effective solutions to these problems.

Ask any RSM client what stands us apart and the answer usually reflects one or more of our core values: **Reliability; Agility; Flexibility; Value.**



RSM Partners – key facts

- Formed in 2006, independently rated as a key influencer in the mainframe marketplace
- Operating the largest pool of available mainframe skills
- Unblemished track record of on time, on budget delivery
- Uniquely focused on maintaining mainframe infrastructures
- Widely regarded as market leaders by IBM, ISV's, System Integrators and end users alike
- Acknowledged experts in security, compliance and risk assessment of mainframe platforms
- Unparalleled incident response time & resolution
- Running 3 mainframes inhouse



To find out more about these and other RSM Partners services, call +44 (0) 1527 837767 or visit www.rsmpartners.com

T +44 (0) 1527 837767 | E info@rsmpartners.com | www.rsmpartners.com

